



# Samui extra+ Hotel Day1-Day7

## UNDER SAMUI+ PHANGAN & TAO

25 AUG 2021



### ACCOMODATION

NO ONE OTHER THAN THE REGISTERED TOURIST IS ALLOWED TO STAY THE IN THE SAME ROOM

### SWIMING POOL

TOURISTS ARE ALLOWED TO USE THE POOL WITH OTHER GUESTS.

- HOTELS MUST CONTROL CLORINE WITH IN 1-3.
- HOTELS MUST HAVE STANDARDIZED EQUIPMENT FOR CLORINE MEASUREMENTS
- APPOINTMENTS FOR EACH GROUP OF PEOPLE TO USE THE POOL AND TO AVOID THE SAME TIME.
- TOURISTS MUST STRICTLY APPLY TO ALL THE RULES
- HOTEL MUST ACKNOWLEDGE ALL RISK THAT MAY OCCUR FOR POOL USAGE

### RESTARAUNT

TOURISTS ARE NOT PERMITTED TO HAVE FOOD/MEALS OR VISIT CONVENIENT STORES FROM OUTSIDE THE SAMUI EXTRA PLUS AREA . THE COVID MANAGER OR HOTEL STAFF MAY OFFER THE SERVICE BASED ON SAFETY

### RESTAURANT SAMUI EXTRA + HOTELS

TOURISTS ARE ALSO ABLE TO DINE IN OTHER RESTAURANTS IN SAMUI EXTRA + HOTELS



\*(Allowed only day 4-7)

### TOUR AGENCIES

TO VISIT SEALROUTES  
TOUR OPERATORS MUST BE SHA+ CERTIFIRD  
TOURISTS CAN ALSO BOOK SEAL ROUTE  
ACTIVITIES DIRECTLY WITH THE COVID  
MANAGER WHO WILL HANDLE THE  
ARRANGMENTS

### TRANSPORTATION

TOURISTS MUST USE CARS OR BOATS THAT HAVE BEEN CERTIFICATED SAMUI + ONLY. THIS ALSO INCLUDES THOSE WHO TRAVEL FROM PHUKET SANDBOX FROM AIRPORT TO THE HOTEL

\*\* HOWEVER COVID MANAGERS WILL ASSIST IN ARRANGING TRANSPORT FOR TOURISTS.



\*(Allowed only day 4-7)





# Samui extra+ Hotel Day1-Day7

## UNDER SAMUI+ PHANGAN & TAO

25 AUG 2021

### BEACH ACCESS

BEACH ACCESS IS GRANTED FOR TOURISTS WITHIN THE PERIMETERS OF THE HOTEL BUT NEED TO BE AWARE OF OTHER TOURISTS AND KEEP SOCIAL DISTANCE



### RELAXATION

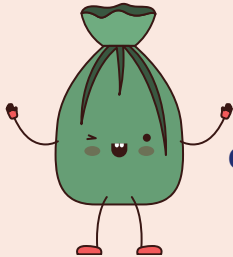
HOTEL MAY OFFER ACTIVITIES THAT OFFER RELAXATION. (ACTIVITIES MUST NOT ALLOW ANY TOUCHING ACTIVITIES)

IF INSTRUCTORS ARE TO VISIT THE PREMISES, HE OR SHE MUST BEEN FULLVACINATED AND MUST HOLD A RT-PCR TEST WITHIN 72 HOURS



### WASTE

ALL WASTE FROM THE SEALED ROUTE MUST BE TIGHTLY DOUBLED SEALED THEN CARRIED OUT AS GENERAL WATSE WHILST WEARING GLOVES.



### ALCOHOL

TOURISTS MAY CONSUME ALCOHOL UNDER THE CONSIDERATION OF THE COVID MANAGER WHICH WILL NOT CAUSE ANY CONFLICT TO THE REGULATIONS OF THE THE PUBLIC HEALTH COMMISSION.



\*\*\* Regulations have been set by the Suratthani Province team for awareness of the covid-19 pandemic

### MAID

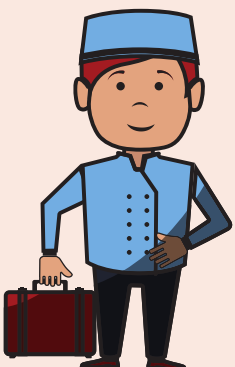
HOTEL MAIDS IN SAMUI EXTRA PLUS HOTELS' MUST BE FULLY EQUIPPED WITH PPE SUIT ALONG WITH MASKS, FACE SHIELDS, GLOVES, BOOTS, PLASTIC CAPS AND WATERPROOF GOWNS.



### CONCIERGE AND BELL BOYS

DRIVERS AND BELL BOYS THAT TRANSPORT TOURISTS AND MANAGE LUGGAGE MUST WEAR PPE SUITS AND ARE EQUIPPED WITH GLOVES AND WATERPROOF GOWNS.

- ONCE THE DRIVER HANDLES THE LUGGAGE, GLOVES AND WATERPROOF GOWNS MUST BE THROWN AWAY AT THE MARKED POINT.
- BELL BOY MUST HANDLE THE LUGGAGE DIRECTLY FROM THE CAR TO THE ROOM ONCE ARRIVED WITHIN THE HOTEL.





# SHA+ Hotel : Day8-Day14

## UNDER PHUKET EXTENSION AND SAMUI+ PHANGAN & TAO

25 AUG 2021

### ESTABLISHMENT

COVID MANAGER MUST ADVISE TOURISTS TO USE THE STANDARD SERVICES OF QUALIFIED REGISTERED SAMUI PLUS OR SHA+ ESTABLISHMENTS WITHIN THE THREE ISLANDS.



### RELATIVE AND FRIEND

A RELATIVE OR FRIEND ARE PERMITTED TO STAY WITH THE TOURIST UNDER THE SAMUI+ PROGRAM, BUT MUST HAVE COMPLETED VACCINATIONS TOGETHER WITH COVID-19 RT-PCR TEST WITHIN 72 HOURS UPON ARRIVAL AND MUST SIGN AND AGREE TO THE CONSENT FORM



### BOAT

TOURISTS MAY TRAVEL BY BOAT BETWEEN THE ISLANDS USING REGISTERED PUBLIC BOAT OPERATING AT THE CERTIFIED PIERS. THE OTHER BOAT MUST REQUIRE PERMISSION FROM THE HARBOUR DEPARTMENT

AS EACH COMPANY WILL ONLY CARRY 60 % OF FULL CAPACITY, CONDUCT STANDARD HEALTH SCREENING, FOLLOW SAFETY PRECAUTIONS AND PROCEED BY THE STANDARDS OF D M H T T  
**List of permitted pier to travel between Koh Samui, Koh Phangan, Koh Tao**



KOH SAMUI LOMPRAWA NAPHALARN, BURIRASA (GUESTONLY) AND PHUYAI NON PIER

\*\*KOH PHANGAN = THONG SALAPIER

\*\*KOH TAO = BAN MAEHAD PIER

### POOL

TOURISTS ARE ABLE TO USE AND SHARE THE SAME SWIMMING POOL WITH OTHER GUESTS.

- HOTEL MUST CONTROL THE CHLORINE LEVEL TO 1-3.
- EACH POOL MUST BE TESTED WITH A STANDARD CHLORINE TESTER
- MAKE APPOINTMENTS FOR EACH DIFFERENT PARTIES TO SWIM AT DIFFERENT TIME
- HOTEL MUST INFORM TOURISTS OF THE RISKS OF USING THE SAME SWIMMING POOL.



### CAR

TOURISTS MUST USE THE TRANSPORTATION SERVICES WHICH ARE REGISTERED BY SAMUI EXTRA PLUS ISSUED BY COVID CENTER WITHIN THE AREA OR OTHER VEHICLES WITH LEGAL REGISTRATION AND A FULLY VACCINATED DRIVER. EVERY REGISTERED CAR MUST HAVE SAMUI+ SYMBOL.

**\*Not allowed tourists to rent or use thier own car\***





# SHA+ Hotel : Day8–Day14

## UNDER PHUKET EXTENSION AND SAMUI+ PHANGAN & TAO

25 AUG 2021



### PHUKET ROUTE

PHUKET ROUTE TO KOH SAMUI, PHANGAN AND TAO ONLY ACCESSIBLE BY AIR PLANE,

### APPLICATION

TOURISTS MUST ACTIVATE THE APPLICATION DURING THE 14 DAY PERIOD

- MOR CHA NA
- SAMUI HEALTH PASS



### COVID MANAGER

THE COVID MANAGER IN THE SHA+ HOTEL WILL ACCOMMODATE THE TOURIST AND REPORT THE ESSENTIAL INFORMATION TO THE SYSTEM AS REQUESTED (*SAMUI HEALTHPASS/ THAILANDSHABA.COM*)



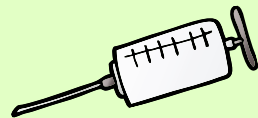
### ACCOMODATION

TOURISTS ARE ALLOWED TO STAY ONLY AT SHA PLUS HOTELS AND MUST BE SAME HOTEL AS ON THE COE DOCUMENT. TOURIST ARE NOT ALLOWED TO RELOCATE HOTELS ON ARRIVAL



### THIRD RT-PCR

FOR THE THIRD COVID-19 EXAMINATION, TOURISTS CAN USE THE SERVICES OF KOH SAMUI HOSPITAL, KOH PHANGAN HOSPITAL OR KOH TAO HOSPITAL WITH ASSISTANCE OF THE COVID MANAGER AND THE APPOINTMENT MUST BE CONFIRMED ONE DAY IN ADVANCE



### RELEASE FORM

AFTER THE COMPLETION OF THE 14 DAYS, TOURISTS CAN COOPERATE WITH COVID MANAGER IN ORDER TO OBTAIN THE RELEASE FORM. TOURIST MUST SHOW RELEASE FORM TO GOVERNMENT STAFF WHEN DEPARTURE FROM KOH SAMUI, PHANGAN AND TAO

TOURIST CAN ACQUIRE RELEASE FORM VIA THE FOLLOWING CHANNELS

1. SAMUI+ TOURISTS ARE ABLE TO ACQUIRE RELEASE FORM VIA SAMUI HEALTH PASS SYSTEM
2. PHUKET EXTENSION TOURIST ARE ABLE TO ACQUIRE RELEASE FORM VIA THAILANDSHABA.COM



**\*COVID MANAGER MUST BE INFORM TO COMMAND CENTER IN EACH AREA IF TOURIST ARE NOT FOLLOW ANY RULES OR REGULATION\***